

EGIGATEK eGM-A4020 Brief

(QCA4020 IoT Combo Module)

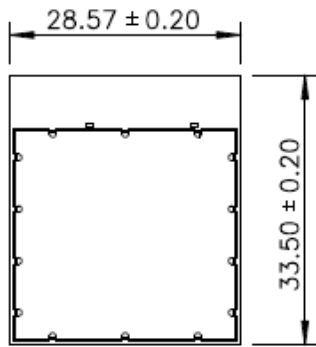
1. Description

eGM-A4020 is a LGA wireless local area network(WLAN), Bluetooth(BT) Low Energy and 802.15.4 combo module to support dual-band 1X1 IEEE 802.11 a/b/g/n WLAN standards, BT5.0 and 802.15.4 enabling seamless integration of WLAN with BT Low Energy and Zigbee technology.

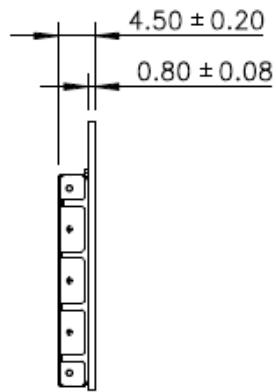
2. Features

- 3 embedded processors, ARM Cortex-M4F + ARM Cortex-M0 + XTENSA
- Wi-Fi Support Dual band 1x1 a/b/g/n mode
- Bluetooth Low Energy (BLE) compliant to the SIG v5 specification
- IEEE802.15.4 compliant to the v2006 specification and also featuring Coordinated Sample Listing (CSL), from the 802.15-2015 specification
- Secure boot(TBC)
- Dynamic voltage and frequency control
- Configurable memory retention for minimizing deep sleep power per application
- Interfaces:
 - HS USB2.0 x 1
 - 2xI2C
 - HS UART x 1 and 2-wire UART x 1
 - HS SPI x 1 and 2-wire SPI x 1
 - Up to 8 channels Sensor ADC(12 bit, 1Msps)
 - Up to 8 PWM optimized for LED lighting applications
 - SDIO 2.0
 - I2S
 - GPIOs, JTAG debug port

3. Pin Placement and Dimensions (in mm)



TOP VIEW



TOP VIEW

